

Good News



Volume 3, Issue 159
NOVEMBER 30, 2022

Our Mission:

To Make Disciples of Jesus Christ for the Transformation of the World

SUNDAY WORSHIP SCHEDULE:

Traditional Service 8:30am
Adult Classes 9:30am
Praise Service 10:30am
RootsKids 8:30 or 10:30
Communion on Dec. 4

With everything that is happening in our world, in our church and in our lives, isn't it a blessing to receive some good news? Celebrating Christmas together with family and loved ones is something that we all need.

We're looking forward to sharing these Christmas worship experiences with you:



December 4—**One Starry Night - A Journey to Bethlehem 3:00-5:00pm**
December 11—**Children's Christmas Pageant at 10:30am Worship**
Christmas Eve—**Family Oriented Worship at 4:00pm**
Christmas Eve—**Traditional Service at 7:00pm**
Christmas Day—**ONE Sunday Worship at 10:00am with Communion**
New Year's Day—**ONE Sunday Worship at 10:00am with Communion**

Regular Sunday Worship Schedule Resumes on January 7



All Church Conference

A Time for our Congregation to Focus on what Unites Us!

We will have that opportunity on **Monday, December 12, at 6:30 p.m.** when we gather in Fellowship Hall for our All Church Conference.

It will be a chance to celebrate the progress we have made this year and to cast a vision and goals for 2023. We will be determining the direction our church will take in striving for **A Life Centered on God.**

It will be a time for examination and discussion of our **method** of moving forward on our individual **Discipleship Pathway** with the support and power of small groups and mentor partners.

I encourage you to join us as we engage in discussion and discernment of God's plan for us, and the important opportunities and challenges for Asbury **United Methodist Church** in 2023 and beyond.

Everyone is Welcome

David Stedwell, Church Council Chair

The Future of the United Methodist Church

As a part of the larger United Methodist Church, the Asbury Church is connected to what is happening in our denomination. Some local congregations are currently choosing to leave the denomination through a process called "disaffiliation." More information can be found in a resource guide that is available on our website at JesusIsTheBridge.org under the "About Us" and "Future of the UMC" tabs.

If anyone feels that the Asbury Church should explore disaffiliation they may make such a motion at our Church Conference on December 12. If there is a second we will use a paper ballot. If the motion is approved by a majority, then in the coming months we would formally explore disaffiliation and ultimately conduct a congregational vote that would require a two-thirds majority to pass.

If there is no motion or a motion does not receive a majority approval, then we will proceed into the future with a renewed connection to the United Methodist Church.

We'll certainly have challenges to face, but with the hope, love, joy and peace of Christmas, our future looks bright.

Pastor Tom

Welcome Bishop Kennetha Bingham-Tsai



We are excited to announce that the North Central Jurisdictional Conference of the United Methodist Church met in November and elected a new bishop for Iowa. Bishop Bingham-Tsai will follow Bishop Laurie Haller who will be retiring at the end of this year. You can learn more about Bishop Kennetha at <http://www.bighamtsai.org/>. Bishop Kennetha is described as a "Bridge-Builder and healer, reaching across boundaries and divisions to bring people together."

Retirement Celebration Honoring Brenda Sherrick



The Staff Parish Relations Committee announces that Brenda Sherrick has decided to retire after over 20 years as one of our Parish Nurses. With her previous years as Youth Director, Brenda has been on staff since 1992. We are so grateful for her many years of dedicated and compassionate service. A reception will be held for Brenda on **Sunday, December 11 at 9:30 during the fellowship hour after the early worship and before the Children's Christmas Program.**



Fun Family Event! RootsKids Christmas Program:

A Very Mixed Up Christmas Pageant:

A Christmas Nativity Play

December 11th at the 10:30am Worship Service

Soup Lunch Following the Pageant

in Upper Fellowship Hall



**JR & SR HIGH
YOUTH GROUP**

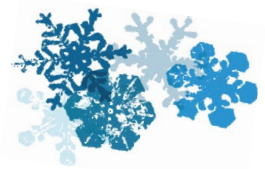
GRADES 6-12

EVERY SUNDAY 6-7:30PM

IN THE YOUTH CENTER



A Message from Your Parish Nurse Team IS IT... COVID, THE FLU OR A COLD?



It's likely COVID if...

- Fever or chills
- Sore throat and cough
- Shortness of breath
- Fatigue
- Muscle aches
- Headache
- Loss of taste or smell
- Runny or stuffy nose
- Nausea or vomiting
- Diarrhea

It's likely The FLU if...

- Feels as if you got hit by a truck suddenly
- Fever and chills
- Muscle aches
- Sore throat and cough
- Runny or stuffy nose
- Headache
- Fatigue

It's likely A COLD if...

- Comes on slowly over two or three days
- Runny or stuffy nose
- Sneezing
- Sore throat and cough
- Watery eyes
- Fever (rarely)
- Nasal mucus that starts clear but turns to white, yellow or green after two to three days

Copied from AARP Bulletin, Nov. 2022

Your Parish Nurse Team - *Brenda, Carol and Cheryl*



AIM (ASBURY IN MISSION) "DOING GOD'S WILL"

Missions of the Month for December

Salvation Army Bell Ringing at K & K

Bell Ringing is in full swing at K & K Hardware! Sing-up for a time to ring on our Asbury website [JesusIsTheBridge.org](https://www.asbury.org/jesusisthebridge.org) by clicking on the red K & K Sign-Up Button or you may call the church office. Thank you!

Santa for Seniors

We are still seeking donations to purchase gift bags for 75 seniors at Iowa Masonic Health Care Center. We will be delivering gift bags on December 19. Call Patti Sorensen at 563-343-7351 if you would like to help deliver! Thank you!

The Center Holiday Dinner & Meal Delivery

Several Asbury small groups (Upper Room Men's Group, LIFT Women's Ministry, WINGS, Adult Sunday classes including Agape, Explorations & Adventures in Faith, and the Element 412 youth group) are combining forces to provide a Holiday Meal and Arts & Crafts Experience for invited guests at The Center at 1411 North Brady Street, Davenport, IA on Saturday December 17th. Also, meals will be prepared and delivered to some Asbury families on that same day. If you are willing to contribute to the effort by helping to serve at The Center, delivering meals or with a monetary donation, please contact Cliff Pim on his cell (563) 340-2722 or to his email-cpim@hhsales.net

Stewards of Creation November Congregational Challenge: Find alternatives to wrapping paper and consider each purchase carefully. Visit <https://www.facebook.com/AsburyStewardsOfCreation> for details.

Terracycle - New! We are now accepting multi-pack candy bags (not wrappers). Also, during December and January, we will be accepting Christmas lights! Please wrap strands in a small bundle. We are accepting pens, highlighters, markers, glue sticks, toothpaste tubes (caps on), dental floss containers, cereal and chip bags. All may be placed in the Asbury Terracycle bin near the elevator.

Card Ministry... **Card Ministry will not meet in December.** Join them on January 11th. For more information go to their Facebook page, the Asbury website or contact Alinda Littrel or Linda Dudgeon.

Friendly Thrift Center...has been very busy and has filled many vouchers for those in need! They still need boys and girls winter clothing and hygiene items including deodorant, soap, shampoo, toothpaste & toothbrushes. They also will gladly accept hotel size shampoo, lotion, conditioner and soaps. Backpacks are also in high demand, as many of our community's homeless carry everything they own in a backpack. Thank you!

- **Office Hours**....Asbury Office Hours are Monday-Friday, 8:00-Noon and afternoons by request. Please feel free to contact a staff member if you need assistance after hours.
- **Praises and Requests for Prayer**....may be submitted on our website by clicking on the "**Prayers & Praise**" button. If you would like to be part of Asbury's Prayer Team please contact Pam & Pat Thornton, Pastor Tom or the Parish Nurse Team.
- **Our Heartfelt Prayers are with**....Sylvia Sorensen and family on the death of her husband, Vernon, on November 27.
Pam & Pat Thornton and family on the death of Pam's mother, Dorothy Gossweiler, on November 29.
- **Newsletter Deadline**....Articles for the next Good News should be in the church office no later than **8:00am on Monday, December 12.**
- **Adult Helpers Needed for RootsKids**....Sundays at 10:30am. Come once a month or more! Sign-Up in either Narthex—See Linda Carver for more information.
- **Adult Helpers Needed for Element 412**....Grades 6-12 Youth Group on Sunday evenings 6:00-7:30pm. Please contact Becca Johnson at beccaj@asbury-bett.org or the church office if you can help!
- **Rachel Circle**Rachel Circle meets on the second Tuesday of each month. On **December 13 we will meet at 6:30pm in Upper Fellowship Hall** to learn about Tapestry Farms; they work with refugees to provide assistance in many ways. All are welcome!
- **LIFT - Ladies In Fellowship Together**...Details of dates and events can be found on our LIFT Facebook page. You may also contact Jenny Bloomquist, Julia Hensch, Marian Paulson or Stephanie Pim. All women are invited!
- **Asbury Men's Group**...This group usually meets on the 2nd & 4th Saturday mornings at 8:00am at the church, **however in December they will meet on the first and third Saturday mornings.** Contact Cliff Pim (563-340-2722), Phil Paulson (309-502-9236) or the church office (355-5218) for the next meeting date, time or **ZOOM** link. All men are welcome!
- **Foundation Gift Recognitions**....Thank you to Ruth McMorran for her gift to the Asbury Foundation in honor of her recent birthday. For information on how you can guarantee a strong future for the life and ministry of Asbury through a gift to the Foundation, please contact John Rabine or the church office.