

ASBURY UNITED METHODIST CHURCH

Good News

Our Mission:

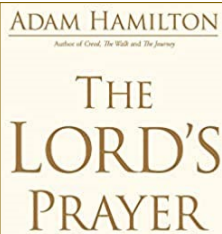
To Make Disciples of Jesus Christ for the Transformation of the World



Volume 3, Issue 156
OCTOBER 12 2022

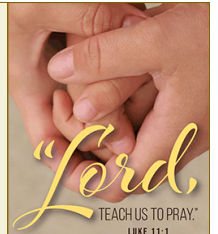
SUNDAY WORSHIP SCHEDULE:

Traditional Service 8:30am
Adult Classes 9:30am
Praise Service 10:30am
RootsKids 8:30 or 10:30
Communion on Nov. 6



Join Us in Worship at 8:30 and 10:30 AM
Fall Sunday Sermon Study Series: "Living The Lord's Prayer"
September 18 - October 23

The Lord's Prayer is the most important prayer that Jesus ever taught.
Books available in each narthex or by calling the church office.



This fall we've been looking at the Lord's Prayer in worship and in our small groups. I have really appreciated the opportunity to spend more time learning about the meaning and power of the prayer that Jesus taught us.

Our goal is not just to study the Lord's Prayer, it is actually to pray the Lord's Prayer more effectively and live it in our daily lives. Prayer is simply a conversation between us and God. And just like any conversation, for it to happen requires being together at a specific time in a specific place. That's how we can evaluate our prayer life. What are the specific places where you regularly spend time with God in prayer?

A life that is daily centered on God will bring us the meaning, peace and joy that God intends. Prayer is the foundation. Let's encourage each other to move in that direction together.

Pastor Tom

FALL-O-WEEN
SATURDAY OCT. 29 - 4:00-6:00
Trunk or Treat, Food, Games, Popcorn,
Drinks, Candy, Maze, Music
Candy Donations Needed
bring to church by 10-21
Volunteers needed to help with games, food, to set up the maze
and decorated cars to hand out candy!
1809 Mississippi Blvd. Asbury Church Corner Lot

Newcomers Gathering on October 16

9:30-10:30am

Lower Level Room #110

Interested in joining Asbury? The first step is to attend our upcoming NEWCOMER'S GATHERING on **October 16**. It will be held from 9:30-10:30 in Room 110 on the lower level. This is a time for us to get to know you better and to give you a packet of materials which will provide you with information regarding the exciting ministries and opportunities at Asbury. **All are invited!** Questions? Call the church office or contact Linda Manning.

**Support
Hurricane
Relief**
UMCOR Advance #901670

We invite you to actively support and pray for the survivors of those affected by Hurricane Ian. By giving through UMCOR Advance, 100% of your donation always reaches your chosen mission project or ministry. You may give by going directly to www.iaumc.org, through our Asbury website JesusIsTheBridge.org, or by making a check to Asbury (marked UMCOR).

Thank you for your faithfulness and generosity.

For more information on how to help visit: iaumc.org/disasterministries

FREE Asbury Church Member Photos



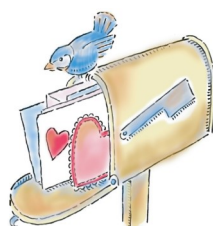
Session times are
available on
October 14, 15, 16



Sign Up at JesusIsTheBridge.org



4th & 5th Grade Kids Club Bonfire
Rescheduled for Oct. 19 5:30-7:00PM
RSVP Linda Carver by Oct. 16!



Cards are available in the west narthex for those who signed up to be a Prayer Warrior for our children and youth. Please help yourself and send off a note of encouragement today!

Linda Carver

Want to be part of our Liturgical Team?

We are looking for Adults & Teens to assist
with our 8:30am worship service
assisting with reading:

- Scripture
- The Unison Prayer

Contact Stephanie Pim or the Church Office



**JR & SR HIGH
YOUTH GROUP**
GRADES 6-12

EVERY SUNDAY 6-7:30PM IN THE YOUTH CENTER

(No Youth Group on November 20)

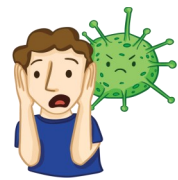
Let no one despise your youth, but set the believers an example in speech & conduct, in love, in faith, in purity.

1 Timothy 4:12 NRSV



Message from Your Parish Nurse Team

COLD/FLU/COVID: Which is it?



What we used to call 'flu season' could be any of those three maladies! Since we've been vaccinated for COVID and get flu shots, we have become a bit lax in our efforts to be safe.

- If you have a fever (even a slight one), stay home, please! This is usually the first sign of an infection. This is the best way to protect others at the time you might be most contagious.
- If you are coughing, no matter the reason, consider wearing a mask when you are around others, particularly if you are in close proximity.
- Remember that '6 foot' suggestion of the past? Maybe think about how close you are to others when in conversation or in a group. It is not wrong - ever - to respect the personal space of others.

We all need to be vigilant in our efforts to stay healthy and look out for one another. This doesn't mean that we cannot be in conversation with one another; but be aware of your surroundings, be cognizant of those around you; and take care of your own health.

Brenda, Carol, and Cheryl

Our prayers continue to be with Brenda as she recovers from a back injury. She will be taking an extended period of time off to heal. If you have a need from the Parish Nurse Team please contact Carol Jackson, Cheryl Ewert or the church office. Thank you.



All Saints Day is a time to remember, honor and give thanks for the people who have been saints for us and especially those who have died since the last All Saints Day. **On Sunday, October 30th** at both the 8:30 and 10:30 a.m. worship services we will be honoring the members, and those affiliated with Asbury United Methodist Church, who have died since the last All Saints Day. Please join us for this time of remembrance.

Missions

AIM (ASBURY IN MISSION) "DOING GOD'S WILL"



Mission of the Month for October

This year's **Annual CROP Walk** took place on **October 2**. You may continue to support this important fight against hunger throughout October with a financial gift to Asbury marked CROP. You may also give online at our website JesusIsTheBridge.org "Give Online" tab & choose the Missions tab. We will continue to accept donations throughout the month.

Thank you!

Thank You for Your Service!

- Agape Adult Sunday School members prepared and served 87 meals for the Churches United Zion Mealsite on October 5.
- 16 Asbury members participated in the October 2 CROP Walk. Check out their smiling faces on our Asbury Facebook page! To date we have collected \$795 for CROP.
- Asbury members & friends have given \$450 through the special UMCOR Advance Special #901670 for Hurricane Ian Relief.
- The Thursday AA Group is the only meeting in the Quad Cities offering space for child care during the meeting. They are most appreciative and want to thank you for reaching out to help parents in our community!

Stewards of Creation October Congregational Challenge: Use Less Plastic and Avoid Plastic Packaging

Terracycle - Accepting pens, highlighters, markers, glue sticks, toothpaste tubes (caps on), dental floss containers, cereal & chip bags.

Card Ministry.... This group has a lot of fun making cards and everyone is welcome! Join them on **the second Wednesday of each month at 6:30pm in Room 118**. For more information go to their Facebook page, the Asbury website or contact Alinda Littrel or Linda Dudgeon.

Friendly Thrift Center....is in need of winter clothing for boys and girls.

•**Office Hours**....Asbury Office Hours are Monday-Friday, 8:00-Noon and afternoons by request. Please feel free to contact a staff member if you need assistance after hours.

•**Praises and Requests for Prayer**....may be submitted on our website by clicking on the "**Prayers & Praise**" button. If you would like to be part of Asbury's Prayer Team please contact Pam & Pat Thornton, Pastor Tom or the Parish Nurse Team.

•**It's a Girl!**....Congratulations to Jim & Michelle Luebke on the birth of a granddaughter, Julia Belle Luebke. Parents are Jonah and Sarah.

•**Our Heartfelt Prayers are with**....the family and friends of Donna Woods, who passed away on October 7.

•**Newsletter Deadline**....Articles for the next Good News should be in the church office no later than **8:00am on Monday, October 24**.

•**Family Photo Opportunity!**....Carrie Meumann is making appointments for free family photos in the Asbury Studio. Go to AsburysTheBridge.org to sign-up today!

•**Adult Helpers Needed for RootsKids**....Sundays at 10:30am. Come once a month or more! Sign-Up in either Narthex—See Linda Carver for more information.

•**Adult Helpers Needed for Element 412**....Grades 6-12 Youth Group on Sunday evenings 6:00-7:30pm. Please contact Becca Johnson at beccaj@asbury-bett.org or the church office if you can help!

•**Rachel Circle**Rachel Circle will meet on **Tuesday, November 8**. All women are welcome!

•**LIFT - Ladies In Fellowship Together**...Details of dates and events can be found on our LIFT Facebook page. You may also contact Jenny Bloomquist, Julia Hensch, Marian Paulson or Stephanie Pim. All women are invited!

•**Asbury Men's Group**....This group meets on the 2nd & 4th Saturday mornings at 8:00am at the church. Contact Cliff Pim (563-340-2722), Phil Paulson (309-502-9236) or the church office (355-5218) for the next meeting date, time or **Zoom** link. All men are welcome!

•**Foundation Gift Recognitions**....Thank you to Linda Manning for her gift to the Asbury Foundation in honor of her recent birthday. For information on how you can guarantee a strong future for the life and ministry of Asbury through a gift to the Foundation, please contact John Rabine or the church office.