



Please Join Us for Easter Worship!

April 17 at 6:30am, 8:30am & 10:30am
LiveStream at 10:30am

Easter Morning Continental Breakfast from 7:30-10:30am
Pastries, Fruit, Juice & Coffee

Easter Egg Hunt! Kids come to the TreeHouse
Easter Sunday at 10:30am!



RootsKids (aka Sunday School) Two Times to Choose From! Sunday 8:30-9:25am or 10:30-11:25am
3 Year Olds—5th Grade • Older children welcome to help with the fun!



VBS coming in June!! Dates and more information coming soon!



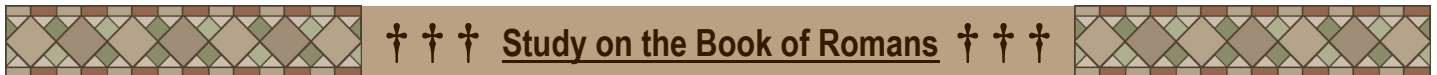
When in Rome...

You probably know how most people would finish this phrase. I would like to suggest a different way. During the month of May we will be looking at the part of the Bible that was written to people who were living in Rome. They were learning how to follow Jesus and live in a new way.

Followers of Jesus today also face the task of living a different way than the people around us. We can learn from people who faced a similar challenge in the past. We can have a core identity as Christians that stays with us wherever we go. We can and should travel and learn from other cultures and peoples, but we also can maintain our values and perspective as a follower of Jesus.

Our relationship with God is what should shape everything we say and do. I hope that we'll be able to learn how to complete that phrase in a new way, "*When in Rome, do as the Christians do.*"

Pastor Tom



† † † Study on the Book of Romans † † †



During the month of May, Pastor Tom will be preaching on the theme "When in Rome....." which will be based on the Book of Romans. Adam Hamilton preached on Romans for six weeks and developed a weekly guide for his sermons. Agape and Explorations classes will be using this weekly guide and Adam's videos to also study the Book of Romans.

The weekly guide is laid out so that one reads about a half page of printed material and a few verses from Romans daily. Those who participate will read the entire book of Romans by the end of six weeks.

The material for this study will be available to all who wish to participate...whether alone, with Agape or Explorations, or in your own small group. The study guide can be picked up in the office or in the Agape classroom. Plan now to join Agape or Explorations on Sunday, **April 24** from 9:30-10:30 to watch the video by Adam Hamilton and discuss the readings from the week. Questions may be directed to Linda Manning.

Newcomers Gathering on April 24 9:30-10:30am • Lower Level Room #109

Interested in joining Asbury? The first step is to attend our upcoming NEWCOMER'S GATHERING on April 24. It will be held from 9:30-10:30 in Room 109 on the lower level. This is a time for us to get to know you better and to give you a packet of materials which will provide you with information regarding the exciting ministries and opportunities at Asbury.

All are invited! • Questions? Call the church office or contact Linda Manning.



Hello Friends,

I am blessed to announce that after prayerful consideration by the cabinet and Bishop Frank Beard of the Illinois Great Rivers United Methodist Conference, I have been appointed to Abingdon UMC starting July 1. We are excited for this move in early June and new experiences to come at Abingdon! I have been blessed to serve here at Asbury for the last school year and will take these memories with me going forward.

Blessings,

Connor Morrison, Director of Youth Ministries

Volunteer Opportunity



Adult Helpers Needed for RootsKids—Sundays at 10:30am
Come once a month or more! Sign-Up in either Narthex—See Linda Carver for Info

Message from Your Parish Nurse Team....NEW PROGRAM beginning in May!!

Matter of Balance is a program which emphasizes practical strategies to manage falls. The class will meet on Tuesdays and Thursdays (8 sessions) in May **beginning on May 3, from 1:00 to 3:00 p.m.** at Asbury in Fellowship Hall.

You will learn to:

- View falls as controllable
- Set goals for increased activity
- Make changes to reduce fall risks
- Exercise to increase strength and balance

Who should attend?

- Anyone concerned about falling
- Anyone interested in improving balance, flexibility, and strength
- Anyone who has fallen in the past
- Anyone who has restricted activities because of falling concerns



Contact Cheryl Ewert with questions or to sign up!



**There are still appointment times for the Foot Clinic on April 25th.
Contact Cheryl or the church office to sign up.**



† † † **ASBURY IN MISSION - MISSION OF THE MONTH** † † †
The AIM *Mission of the Month* for April is *Work in Action!*

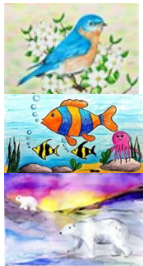


As spring brings in unpredictable weather conditions we would like to organize work crews to go to areas in need when needed.

Some of the opportunities for mission work in April are day cleanup work projects available in Bettendorf and Davenport.

Go to <http://www.xstreamcleanup.org/upcoming-events> to view the opportunities to choose from.

These projects may be anywhere from a weekend to as long as a week. Please continue to look on the church's website at JesusIsTheBridge.org for information on opportunities to put our hands to work and see our mission outreach in action!



Join us Sunday, April 24th to view the "Animals and their Habitats" Art Exhibit

Everyone is welcome to stop by Asbury Upper Fellowship Hall from 8am – Noon. Here you may visit with available artists, view animal artwork, and ponder the many ways we can support birds, insects, land animals, aquatic life and their habitats. Preschool-HS youth have created a variety of animal art for you to enjoy. This coordinates with our Asbury Stewards of Creation April Challenge: "Appreciate and Support Animals and their Habitats". The exhibit will be viewable through May 1st.

- **Office Hours**....Asbury Office Hours are Monday-Friday, 8:00-Noon and afternoons by request. Please feel free to contact a staff member if you need assistance after hours.
- **Praises and Requests for Prayer**....may be submitted on our website by clicking on the "**Prayers & Praise**" button. If you would like to be part of Asbury's Prayer Team please contact Pam & Pat Thornton, Pastor Tom or the Parish Nurse Team.
- **Our Heartfelt Sympathy to....**
The family and friends of Marg Ruppert, wife of former Asbury pastor, Rev. Bob Ruppert, on March 30 in Cedar Rapids.
The family and friends of Marjorie Merritt, a Senior Star resident and Asbury attender. Marjorie died on April 5.
- **The Worship Commission** would like to remind you to please wear your Asbury nametag. If you would like to order a nametag you may call the church office. (No cost for Asbury members 8th grade and older.)
- **Newsletter Deadline**....Articles for the next Good News should be in the church office no later than **8:00am on Monday, April 25.**
- **Kids Club**....Fun Activities for 4th & 5th Graders on the **First Wednesday of each month from 5:30-7:00pm**. Light meal provided. RSVP Linda at 319-573-9687 if you plan to come!
- **Jr. & Sr. High Youth Group**....**Wednesday Nights from 6:00-7:00pm**. If you would like a schedule please contact Connor Morrison, Director of Youth Ministries, at connorm@asbury-bett.org or text 309-373-5316.
- **Card Ministry**....This group has a lot of fun making cards and everyone is welcome! Join them on **the second Wednesday of each month at 6:30pm in Room 118**. For more information go to their Facebook page, the Asbury website or contact Alinda Littrel or Linda Dudgeon.
- **Ladies In Fellowship Together**...Details of dates and events can be found on our LIFT Facebook page. You may also contact Marian Paulson at marianedmund@yahoo.com. We invite all women to join us!
- **Asbury Men's Group**....This group meets on the 2nd & 4th Saturday mornings at 8:00am. Contact Cliff Pim (563-340-2722), Phil Paulson (309-502-9236) or the church office (355-5218) for the next meeting date, time or **ZOOM** link. All men are welcome!.
- **Stewards of Creation April Congregational Challenge** "Appreciate and Support Animals and their Habitats"
Visit: <https://www.facebook.com/AsburyStewardsOfCreation> for photos of Animal Art Exhibit entries (Week of April 24th), wildlife videos and ways we can support animals/habitats.
- **Foundation Gift Recognitions**....Thank you to Ken Jones and Darvin Schroeder for their gifts to the Asbury Foundation in honor of their recent birthdays. For information on how you can guarantee a strong future for the life and ministry of Asbury through a gift to the Foundation, please contact John Rabine or the church office.

**THANK YOU....to everyone who has continued to faithfully give your tithes and offerings.
Gifts may be mailed to the church or go to our website JesusIsTheBridge.org to give electronically.**