



## Worship Schedule for **Holy Week**



- † **Palm Sunday Worship** - April 10 at 8:30am & 10:30am with LiveStream at 10:30am
- † **Maundy Thursday Worship** - April 14 at 7:00pm with LiveStream
- † **Special Good Friday Video** - April 15 available all day on Facebook & YouTube beginning at 6:00am
- † **Good Friday Worship** - April 15 at 7:00pm
- † **Easter Sunday Worship** - April 17 at 6:30am, 8:30am & 10:30am with LiveStream at 10:30am
- † **Easter Morning Continental Breakfast** - 7:30-10:30am - Pastries, Fruit, Juice & Coffee

### **Ready for Departures**

During this season of Lent we've been spending our time in worship preparing for the various departures we all must face in life. Some departures are those that we control. There are other times, beyond our control, when we must leave behind some aspect of our lives that is no longer there.

The story of Jesus and the last week of his physical life on earth includes both types of departures. Jesus did not control the people who were coming to take his life. But he did control his response, which was to remain faithful to his mission of bringing God's loving Kingdom to earth. Easter is the assurance that Jesus made the right choice.

As we relive the events of Holy Week and Easter, my prayer is that we will be inspired to follow Jesus and make the right choices. We can control our response to the things that are beyond our control. May we choose love over hate; forgiveness over revenge; humility over arrogance and peace over domination. **I hope you'll join us on this journey!**

Pastor Tom

### † † † **Sunday Worship Schedule** † † †

**Masks Optional & Welcome • Traditional Service at 8:30am • Praise Service at 10:30am • Communion on April 3  
Adult Classes 9:30-10:30 • Coffee & Refreshments 9:30-10:30 • Nursery for Infants through 2 Years 8:00am-Noon**

**Worship Online Live at 10:30am by going to our website: [JesusIsTheBridge.org](http://JesusIsTheBridge.org)**

**Recorded Online Service Also Available on the Website for Viewing Later in the Day or Week**



**RootsKids (aka Sunday School) Two Times to Choose From! Sunday 8:30-9:25am or 10:30-11:25am  
3 Year Olds—5th Grade • Older children welcome to help with the fun!**

#### **Coffee Time Between Services - 9:30-10:30**



**Linger after 8:30 worship for fellowship with friends or come early for  
10:30 worship to visit in the Café or grab a "to-go" cup to enjoy while worshipping!**



The Hospitality Team continues to provide coffee and snacks on Sunday mornings between worship services. In order to keep everyone safe, including the servers, we wear gloves and a mask. We make sure that all food is packaged or wrapped before serving. We pour the coffee for each individual. We will be adding juice as a choice soon. These procedures are followed at the direction of the Parish Nurses and using the guidelines from other health organizations.

**Please walk over to Fellowship Hall to enjoy the company and conversation!**

### † † † **Church Council Recap** † † †

We are into the first year of our reorganized church structure. The plan is for the Church Council to meet quarterly and stay focused on the overall direction of the church and any specific decisions that need to be made.

The intent is to keep the congregation informed and provide opportunities for input. Chairperson Dave Stedwell led the first meeting of this new structure on Monday, March 21. There were several additional members of the congregation who were present in person and online. One formal decision was the approval for the Community Bible Study to continue using the building for their meetings. A second decision was to postpone the renaming of the Upper Fellowship Hall until more information is available. A task force has been researching options to make our facilities more functional, flexible and inviting. Funds to make improvements are available from the Asbury Foundation. We are still in the idea stage. More information will be available before any changes are finalized.



**Easter Egg Hunt! Kids come to the TreeHouse on Easter Sunday at 10:30am!**



**VBS coming in June!! Dates and more information coming soon!**



#### **Volunteer Opportunity**



**Adult Helpers Needed for RootsKids—Sundays at 10:30am  
Come once a month or more! Sign-Up in either Narthex—See Linda Carver for Info**

## Message from Your Parish Nurse Team

In the last newsletter, the emphasis was on how important 'good sleep' is for our over all health. Good sleep has a tremendous effect on how we feel physically, mentally and emotionally. In order to get 'good sleep', it is essential to establish a **Sleep Routine**. Here are six important points to keep in mind:

- Decide on a set time/sleep schedule.
- Have a light snack or bedtime tea.
- Include physical activity in your daily routine.
- Leave electronics alone when it is close to bedtime.
- Manage your worries; make a to do list for the next day.
- Create a restful environment with music; reading; dim lights.

**New Program Coming: "Matter of Balance" - Watch for Information in the Next Newsletter!**  
Take care and be well! From Brenda, Carol and Cheryl

### UMCOR Advance Specials

Special Advance #223 Iowa Tornadoes  
Special Advance #982450 for Ukraine  
Special Advance #14053A for Pastors  
in Ukraine & Moldova



Please specify if your gift is for the Annual UMCOR offering or for one of the Special Advance Missions listed above. Checks may be made payable to Asbury UMC (marked accordingly) or online at [JesusIsTheBridge.org](https://JesusIsTheBridge.org)

For More Information: <https://umcmission.org/umcor/>



### First QC Piano Ensemble Festival Concert

April 9<sup>th</sup> at 3pm at Asbury (Free Admission)

Featuring student piano ensembles & special guest artists, Duo Mistral

\* \* \* All Asbury Members are Invited! \* \* \*



### † † † ASBURY IN MISSION - MISSION OF THE MONTH † † †

The AIM Mission of the Month for April is **Work in Action!**

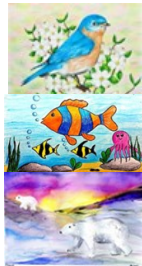


As spring brings in unpredictable weather conditions we would like to organize work crews to go to areas in need when needed.

These projects may be anywhere from a weekend to as long as a week. Please continue to look on the church's website at [JesusIsTheBridge.org](https://JesusIsTheBridge.org) for information on opportunities to put our hands to work and see our mission outreach in action!

### Join us Sunday, April 24<sup>th</sup> to view the "Animals and their Habitats" Art Exhibit

Everyone is welcome to stop by Asbury Upper Fellowship Hall from 8am – Noon. Here you may visit with available artists, view animal artwork, and ponder the many ways we can support birds, insects, land animals, aquatic life and their habitats. Preschool-HS youth have created a variety of animal art for you to enjoy. This coordinates with our Asbury Stewards of Creation April Challenge: "Appreciate and Support Animals and their Habitats". The exhibit will be viewable through May 1<sup>st</sup>.



- **Office Hours**....Asbury Office Hours are Monday-Friday, 8:00-Noon and afternoons by request. Please feel free to contact a staff member if you need assistance after hours.
- **Praises and Requests for Prayer**....may be submitted on our website by clicking on the "Prayers & Praise" button. If you would like to be part of Asbury's Prayer Team please contact Pam & Pat Thornton, Pastor Tom or the Parish Nurse Team.

IN OUR  
Thoughts and Prayers

#### Our Heartfelt Sympathy to....

Rob & Michelle Swinney and family on the death of Rob's grandmother, Fern Fletcher, on March 17<sup>th</sup>  
Carol Webb and family on the death of her husband, Marvin, on March 22<sup>nd</sup>.

- **The Worship Commission** would like to remind you to please wear your Asbury nametag. If you would like to order a nametag you may call the church office. (No cost for Asbury members 8th grade and older.)
- **Newsletter Deadline**....Articles for the next Good News should be in the church office no later than **8:00am on Monday, April 11.**
- **Kids Club**....Fun Activities for 4th & 5th Graders on the **First Wednesday of each month from 5:30-7:00pm.** Light meal provided. RSVP Linda at 319-573-9687 if you plan to come!
- **Jr. & Sr. High Youth Group**....**Wednesday Nights from 6:00-7:00pm.** If you would like a schedule please contact Connor Morrison, Director of Youth Ministries, at [connorm@asbury-bett.org](mailto:connorm@asbury-bett.org) or text 309-373-5316.
- **Card Ministry**....This group has a lot of fun making cards and everyone is welcome! Join them on **the second Wednesday of each month at 6:30pm in Room 118.** On **April 13** they will be working on Teacher Appreciation cards. For more information go to their Facebook page, the Asbury website or contact Alinda Littrel or Linda Dudgeon.
- **Ladies In Fellowship Together**...Details of dates and events can be found on our LIFT Facebook page. You may also contact Marian Paulson at [marianedmund@yahoo.com](mailto:marianedmund@yahoo.com). We invite all women to join us!
- **Asbury Men's Group**....This group meets on the 2<sup>nd</sup> & 4<sup>th</sup> Saturday mornings at 8:00am. Contact Cliff Pim (563-340-2722), Phil Paulson (309-502-9236) or the church office (355-5218) for the next meeting date, time or **ZOOM** link. All men are welcome!.
- **Stewards of Creation April Congregational Challenge** "Appreciate and Support Animals and their Habitats"  
Visit: <https://www.facebook.com/AsburyStewardsOfCreation> for photos of Animal Art Exhibit entries (Week of April 24<sup>th</sup>), wildlife videos and ways we can support animals/habitats.
- **Foundation Gift Recognitions**....Thank you to Richard Jackson and Joey Arney for their gifts to the Asbury Foundation in honor of their recent birthdays. Thank you to Darlene Roseleaf for a gift given in memory of her parents, Charles & Dorothy Roseleaf (Asbury Charter Members) on their birthdays. For information on how you can guarantee a strong future for the life and ministry of Asbury through a gift to the Foundation, please contact John Rabine or the church office.

**THANK YOU....to everyone who has continued to faithfully give your tithes and offerings.**  
Gifts may be mailed to the church or go to our website [JesusIsTheBridge.org](https://JesusIsTheBridge.org) to give electronically.