



ASBURY UNITED METHODIST CHURCH

Good News!



Our Mission ~ To Make Disciples of Jesus Christ for the Transformation of the World

Asbury United Methodist Church presents

THE STARRY NIGHT

A Free family event to experience the Christmas story.

Date: December 8th
Time: 4-7pm

1809 Mississippi Blvd, Bettendorf www.asbury-bett.org 563-355-5218

A Journey through Bethlehem

Follow the journey of Mary and Joseph on the first Christmas Night!

- Animals • Crafts • Food • Professional Photo Booth • Storytelling Stations •

Details Enclosed ~ Please join us!

WORSHIP SCHEDULE

Sunday, 8:30 and 11:00 AM

- 8:30 - Traditional Service
- 9:45 - Sunday School
- 11:00 - Kids Church
- 11:00 - Praise Service

OFFICE HOURS

Monday-Thursday: 8:00-Noon & 1:00-4:00
Friday: 8:00am-Noon

"I WILL BE LOYAL TO THE UNITED METHODIST CHURCH and uphold it with my prayers, my presence, my gifts, my service and my witness."

BY OUR PRAYERS

Please keep the friends and family on the enclosed list in your daily prayers.

BY OUR PRESENCE

October 27.....	Worship—252
October 27.....	SS & Kid's Church—97
November 3.....	Worship—248
November 3.....	SS & Kid's Church—104
November 10.....	Worship—274
November 10.....	SS & Kid's Church—115
November 17.....	Worship—279
November 17.....	SS & Kid's Church—105

BY OUR GIFTS

October Income.....	\$61,053
October Expense.....	\$58,377
YTD 10/31 Income.....	\$558,817
YTD 10/31 Expense.....	\$554,031
*does not include \$49,345 of apportionment shortfall. Actual YTD deficit is \$44,559	
Goal is to pay in-full by year end.	

BY OUR SERVICE

Thank you for your generous contributions to the Churches United Food Pantry totaling \$15 & 137 items.

Thank You!

Did You Miss Sunday Worship?

Miss a worship service? Sunday's bulletin is available in each Narthex throughout the week following worship. For the latest videos of Asbury worship services go to our website and click on "Video of Sunday Message" to get the direct link! Audio of each service is also available to stream or download to your computer from the website. You might want to check-out the calendar of events, updated weekly, available online as well.

Check-out Our Website to Stay Up to Date on ALL the Latest Asbury News!!

www.asbury-bett.org

"Like Us" on Facebook!



We're also on Facebook. Look us up at "Asbury United Methodist Church" and LIKE our page! Let us know if you have information or pictures you would like to share.



Scan the QR code above with your phone for easy access to our website and Facebook page!

WORSHIP With US

Christmas Eve Worship at Asbury
Tuesday, December 24
5:00 • 7:30 • 10:00 p.m.

Each of Asbury's three **Christmas Eve Evening Worship Services, 5:00, 7:30 and 10:00 p.m.** will conclude with a candlelight hymn. The 5:00 service will be family oriented for younger children, 7:30 features Christmas Music with our Chancel Choir. The 10:00 service will be a traditional Communion service. Bring your family and friends to celebrate the birth of our savior. All are welcome!



Volunteer Bell Ringers Needed! *Ring a Bell...Help Change a Life*

It is almost bell ringing time again! Please sign-up to help ring the Salvation Army Bell at K & K Hardware from **Nov. 29th through Noon on December 24th**. Sign-up sheets are in the West Narthex on Sundays or near the office during the week.

Please sign-up to Ring!

Asbury is responsible for approximately 200 volunteer hours at K & K!

To give Asbury credit for your contribution to the Salvation Army please make your check to Davenport Salvation Army and leave it in the Kettle at K & K or at the church office.

Thank You!



There are Still a Few Photo Times Available!



Photo Session Dates:

Monday, November 25 and Tuesday, November 26

Go to: www.asbury-bett.org and scroll to the very bottom of the home page to push on the blue "Photo Session Sign-Up" button. You may also call the church office at 355-5218 for assistance or Pat Tank at 563-508-0280.

Volunteers Needed

Volunteers are needed to usher and greet at the Christmas Eve services. Please contact Stephanie Pim at: pimfamily5@gmail.com if you can help!

Thank You!

Happy Holidays!



Come Join the Team!

Sunday AV Volunteers Needed!
Positions Needed for Both
8:30 and 11:00 Worship Services
Training Provided!
Flexible Schedule!

Contact the church office for more details.
355-5218

Newsletter DEADLINE

Articles for the January issue of Good News should be in the church office no later than:

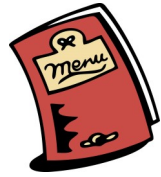
8:00 AM on Monday, December 16
Thank you!

Snapchat Fans!! **Share Your Pictures!**

Don't forget...We have an Asbury Geo-Filter to use on Sunday mornings! Get busy taking photos to share the Asbury Spirit with others!!

Free Wi-Fi internet access is available in the church by using the password asburyquest.





**Great for
Christmas Gift Giving!
2019-20 Dining Tour
Coupon Books**

The 2019-2020 Quad City Dining Tour Coupon books are available in the church office. Each book has over 300 buy-one-get-one free coupons, with over 150 different eating places to enjoy! The book is divided into three different categories: Fine Dining & Theater, Casual Dining, and On the Lighter Side. A donation of \$35.00 is requested, with \$10.00 going to support Hope at the Brick House. Using just one of the coupons will pay for this entire book! If purchasing books on Sunday mornings, a check or exact change is needed. Books are also available Monday through Friday during church office hours.



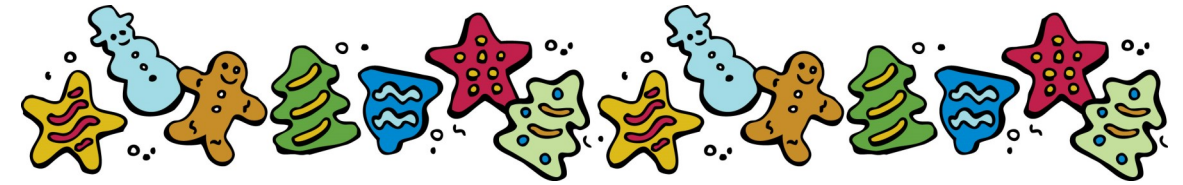
**Marriage
Enrichment
Class
February 29**

Save the Date!

Saturday

February 29, 2020

Plan to join us for an afternoon marriage enrichment event, followed by a renewing of vows ceremony and a wedding reception...complete with cake and punch! For more information contact Marie Bauer at: charlesbauer_2000@yahoo.com



Annual Cookie Walk!

Sunday, December 15

9:30–10:45 or until the cookies are gone!

Our Annual Asbury Cookie Walk (sponsored jointly by Asbury's Jr. High Youth Group and Church & Society Commission) will be held on **Sunday Morning December 15th**. You will be able to purchase a container to fill with your own hand-picked assortment of delicious holiday cookies! All proceeds will benefit Jr. High Youth Group and Church & Society outreach projects.

You need not be affiliated with either group to donate a batch or two of your favorite Christmas cookies. Members of the youth group will be calling bakers to help provide cookies. Cookies may be left at the church any time during the week of the Walk or brought to the Upper Fellowship Hall by 8:00 am on December 15th. Please label as to the type of cookie and if they contain nuts.

For more information please contact Kevin & Becky Carlson at:
carlsons-zoo@juno.com or 332-1093

Thank You!!

The Silent Angel Network

An Opportunity to Help Families in Our Community

The Silent Angel Network consists of anyone who is willing to assist Bettendorf Community School District families in need. By sharing your email address with the Outreach Coordinator for the school district, you will receive an occasional email looking for specific donations of household goods, clothing, services, anything a family might need, and sometimes for volunteers. There is never any expectation that a donor purchase new items, but we know folks may be downsizing, buying new furniture, have kids outgrow their clothes, or can offer a specific skill.



If you have any questions please, contact Paul Wolf, Pastor Tom, or Stephanie Pim. To become part of this giving network, simply submit your email address to mstone@bettendorf.k12.ia.us .

SNACK ATTACK!!

Hope at the Brick House

Church and Society Commission is asking for your support for our ongoing year-round Children's Ministry for the children's after school snack program at Hope at the Brick House. Over 40 children are provided with snacks after school each day as part of their program.



WE WILL NOT be collecting actual food items. We as a congregation can help by providing monetary donations so snack items can be purchased for these children who need our help. Checks may be made out to Asbury with "Hope at the Brick House Snacks" noted on the memo-line or envelope.



The Redemption of Scrooge

Go from “Bah! Humbug!” to a
Blessed Advent and
Merry Christmas!

Is redemption possible for Ebenezer Scrooge? Pastor and author Matt Rawle believes so as he discovers the teachings of Jesus in the words of the Charles Dickens classic *A Christmas Carol*. Rawle dives deep into the dark, sad and greedy world of Scrooge and discovers a man in dire need of a second chance. Along with Scrooge, we meet the ghosts of Christmas Past, Present and Future and in the process learn about living with and for others in a world blessed by Jesus. Rediscover and reinvigorate your Christian faith this Advent and Christmas season and look at this familiar classic through the lens of faith!

Author, Matt Rawle, is an international speaker and one of the most creative pastors serving the church today!

Our pastors will preach the first Advent Series Sermon on December 1, with the series ending on December 22.

**Books are available in each Narthex.
Please Join Us at Asbury this Advent Season!**

Small Group Opportunities:

Four Adult Sunday School Classes: Sundays 9:45—10:45 am

WINGS Group: Wednesdays 6:15-7:30 pm

Thursday Evening Bible Study—Thursdays 7:00-8:30 pm

Ladies' ARM Group—Thursdays 7:00-8:30 pm
(Call Sharon Phillips for location—332-8462)

For more information & contact numbers for the small groups,
please pick up an Advent Flyer located in each Narthex.



**The Starry Night:
A Journey to Bethlehem....Coming to Asbury
Sunday, December 8th from 4:00-7:00 pm
A Free Family Event to Experience the Christmas Story!**

This is a church-wide Christmas event given for our community. Those who attend will have a chance to experience what life was like in the town of Bethlehem when Jesus was born. Guides will be helping groups along through a number of stations as they learn of the journey Mary and Joseph took that special night. Afterward you will have a chance to visit Bethlehem to make crafts and have snacks. We need your help...we need actors/actresses, guides, photographers, craft stall managers, decorators, and a publicity team. This special event will not work without your help and prayers. We need you, the whole church, to make an impact this Christmas. This is a time to make a difference in our community and share God's love with them. There will be tables out in the hallways after services to sign up and ask questions.



Advent Readers Needed

Please help us share the Hope, Love, Joy, and Peace of Advent. Would your family, friends, or small group members be willing to share a reading during this coming season of Advent? The Worship Commission is seeking readers for the 8:30 and 11:00 services. Please contact Patty, in the office at 355-5218 or pattys@asbury-bett.org, if you have any questions, or would like to volunteer.



Scrooge Sermon Series Advent Wreath Booklets

Practice the tradition of lighting an Advent wreath throughout December. Pick up a special booklet in either Narthex to help guide your Advent wreath lighting with *small children*, with *loved ones*, or for *individual reflection*. Booklets go with traditional Advent themes and our sermon series The Redemption of Scrooge. I hope this weekly time of candle lighting will help prepare you to keep Christmas well.

Pastor Heather

YOUTH News!

**We Have a Year of Awesome Events
for the Jr & Sr High Youth!**

Wednesdays 6:00-7:00 pm

We have activities planned that will keep us all busy on Wednesday Nights! In order to accomplish some of the activities, **we will need volunteer drivers** to get the kids to the off-site locations. Please let us know if you would be willing to be called upon from time to time. **You do not need to have a child in the youth program to volunteer!** If you are not receiving Youth Email Updates from Carrie Meumann, be sure to let her know at:

carriem@asbury-bett.org so she can add you to the communication list!

Youth Worship Opportunities

MUSICIANS interested in being part of a band that will be perform at a weekly youth worship service and/or want to be part of the internship group for our youth program, please contact Carrie Meumann @ 563-271-6723.



**Jr and Sr High meet from 9:45am - 10:45am on
Sunday mornings each week during the school year.
Come join us as we dive deeper in the Word of God!**



Roots Kids Sunday School 9:45-10:45am – 2yrs to 5th Grade

Kids Church 11:00-12:00 – PreK-5th Grade

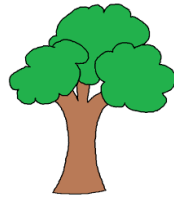
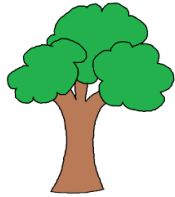
Wednesday Night Kids 6:00–7:00pm – 3yrs to 3rd Grade

Kids Club – Wednesdays 6:00–7:00pm – 4th & 5th Grade



Sunday School Christmas Program!
Sunday, December 15 at 9:45 - 10:45 in the TreeHouse

Featuring kids from 2-Years through 5th Grade
All are welcome to attend and hear joyful songs and enjoy refreshments afterward!



We Give Thanks!

The Roots TreeHouse was Dedicated Last Month!

Thank you to everyone who came. It was great to have a chance to say THANK YOU to the Asbury Men's Group who put so much time and effort into building the TreeHouse stage. If you missed it, come downstairs and check it out. It's such a great place to host children's events and of course, a cool space to do children's ministry!

Kids Church!

Kids are worshiping God in their own worship service every Sunday at 11:00 am in the TreeHouse!

The service is designed for ages PreK-5th Grade

Music, Bible Lessons, Games are all made to reinforce a scripture-based theme each month.

Come join us each Sunday!

Sunday School Teacher Needed - 4th/5th Grade

Commitment Weekly on Sunday - September through May

If you want to be a part of making a difference in the lives of our youth, this is a great opportunity. No previous teaching required.

Contact Carrie at carriem@asbury-bett.org

Christmas Eve and Roots Kids!

On December 24th the celebration begins at 4:00-4:45pm with our 2nd annual NATIVITY PARTY in the TreeHouse!

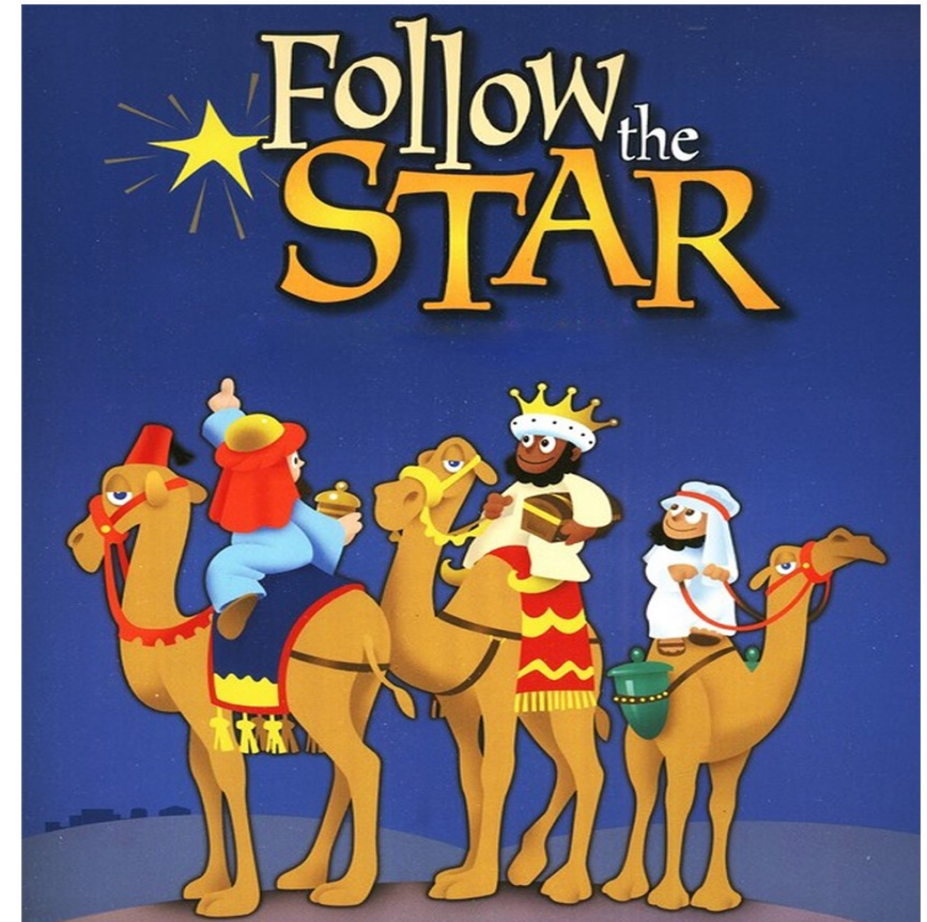
Come see the live animals and have some hot chocolate!

At 5:00 pm, following the Nativity Party, join us in the sanctuary for the Christmas Eve Service as Roots Kids presents the musical **FOLLOW THE STAR**. The youth band will provide music for the congregation to sing along.



presents

A Children's Christmas Musical



Asbury United Methodist Church
Christmas Eve Service - 5pm

All ages will enjoy this service
Invite your friends and family!



Altar Flowers

A sign up sheet is in the West Narthex year-round for anyone who would like to provide flowers for our altar on the Sunday of your choice. This is a nice way to honor a loved one or to celebrate a special occasion!



Asbury Card Ministry Will not meet in December

We will not meet in December. Our next meeting will be at 6:30 on Jan. 8th.

Our group has a lot of fun making cards and everyone is welcome to join us. You do not have to be an expert in paper-crafting and there is something for everyone to do. If you have not received our Card Ministry email reminders and would like to be included, please contact:

Linda Dudgeon at:
lddudgeon@yahoo.com or
Alinda Littrel at:
galauctionservices@gmail.com

*We hope to see you on
January 8th!*



Middle School Pop Can Fundraiser

Thank you for your continued support of Middle School Youth Group Projects by bringing cans and plastic bottles on the first Sunday of each month. The next Pop Can Drop will be on Sunday, **December 1**.

Please remember:
we do NOT take glass bottles.

Thank You!



New Location!

Thank you for your continued support of the Bettendorf Food Pantry. The wood donation chests, previously located in the East Narthex, can now be found under the coat rack near the elevator on the main level.

Pop Can Drop and recyclable items now have a new home as well! Please leave your Middle School Pop Can contributions in the closet on the lower level near the kitchen door, across from the elevator. You will find cans for other recyclable items there as well!

Thank you for helping Asbury be a Green Church!!



Coping & Caring

Caregivers Support Group

December 11, 1:00 - 2:30 p.m.

St. John Vianney Parish
4097-18th Street, Bettendorf
in the Vianney Room
(North Entrance)

Office phone: 563-332-7910
health@sivbett.org

If you have any questions, please feel free to contact Laurie Skjerseth: at 563-340-2784 or Lskjerseth@gmail.com



**Exercise Every Tuesday & Thursday
9:00-10:00 A.M. in Upper Fellowship Hall**

Fun & fellowship included!!
PLUS....It's free!!



Blessed Holiday to All!

Please accept a huge thank you from the Friendly Thrift Center for your support throughout 2019. Your contributions are the life blood of our mission. Whether you gave time, materials, or any other gift, it made a difference! Please continue to support us as we celebrate our 50th year of operation in 2020!



Do you Have Ideas to Share or Church Activities to Promote?

The bulletin board in the main hall between the adult and children's library needs some creative help. If you are a group or individual with a message to promote or creative talents to share, your help is needed. The message can be informational, inspirational, spiritual, promotional, or just thought-provoking! Contact the main office to reserve your dates.



Prayer Requests

Updated prayer requests are listed on our website each week from Rev. Lee Schott, Pastor at Women of the Well UMC located in the Iowa Correctional Institution for Women. The website will allow you to view and pray for the concerns as your time allows. There is also a link to purchase Bibles for the women, as they are always needed as new inmates arrive. Bibles are available at a discount price through Cokesbury.

Visit: www.asbury-bett.org



Mitten Tree and Toy Box

Asbury's Church & Society Commission will again be collecting mittens, hats, gloves & toys to take to the Friendly Thrift Center. There the customers may purchase the items at a nominal cost. Please help us with this very worthwhile project. Your generosity is most appreciated. The Caring Box will be in the east entryway during November and December.

Thank you for your help!

Our fall/winter blood drive was earlier this year and we are thankful for our Asbury (and other) donors!

Thank you to all who donated their time and life saving blood. Also a big thanks to those who provided refreshments; we couldn't do it without you! The next drive will be in early June.

Wishing you and yours
a blessed Christmas season!

Jane Fergades and Katie Nelson
Church and Society Commission



~ Blessing Bags ~ A New Mission is Beginning at Asbury!



Did you know families can not use vouchers from government subsidies, such as SNAP and WIC, to purchase necessities such as soap, deodorant, shampoo, toothpaste and toilet paper?

In partnership with Neil Armstrong Elementary School, please help Asbury fill a need for children in our community by donating hygiene items for the Blessing Bags. Further information and a list of items will be coming soon!

GARDEN MINISTRY

2019 HARVEST – 35,307 lbs.

HARVEST BY LOCATION	
MT. JOY	162
GRACE	35,145



HARVEST BY VEGETABLE (in lbs)

CABBAGE	1,459		GREEN PEPPERS	1,110
CANTALOUPE	1,809		ONIONS	5,629
CUCUMBERS	1,696		POTATOES	1,056
GREEN BEANS	39		SWEET POTATOES	783
			TOMATOES	20,026
			WATERMELON	1,228
			SQUASH//ZUCHINI	429
			BROCOLLI	43



RECIPIENTS

St. Mark's Food Pantry Café on Vine First Baptist Food Pantry

King's Harvest Salvation Army Luther Manor Friendly House Food Pantry

North Park Food Pantry St. James Food Pantry The Center Food Pantry

Grace Bible Church Food Pantry Timothy's House of Hope

Agape Center Cumberland House Bettendorf Food Pantry

Christian Care North Scott Food Pantry Hope @ the Brick House



Please Keep in Your Prayers~

Mary Jo Auliff, Russell Auliff, Tom Buxton,
Becky Carlson, Chuck DCamp, Richard Dennis, Theona Fahl,
Jon Gimmy, Rich Hofmann, Bruce Millage,
Tyler Musal & his parents Mark & Jennifer (Rodine) Musal,
Damon Raker, Nathan Skjerseth

Mary Kay Beck (Ken & Linda Jones' friend)
Wendy Black (Joey Arney's niece)
Dick Brand (Mike Brand's father)
Mike Brotherton (Jeff Ryder's friend)
Cindy Bruhn's Sister (Cathy)
Jill Danielsen (Jo Winegar's sister)
Delvecchio Family (Mindy Lank's friends)
Doil Dover (Gail Dover's brother-in-law)
Ann Dudgeon (Linda Dudgeon's mother-in-law)
Gilbert Garrett (Heather Dennis' father)
Deanne Graber's cousin (David)
Deanne Graber's friend (Sharon)
Max Hanson (Bruce Millage's friend)
Rev. Ken Hartman (Pastor Lorraine's husband)
Jackson (Mary Fanning's grandson)
Pat Jessen (Heather Dennis' mother)
Jenny (Kay Parch's friend)
Kevin Johnson (Dan & Jessica Crippen's friend)
Parker Kress (friend of Jackson Moats)
Mandy (Terry & Kelly Miller's granddaughter's mother)
Max Manson (Bruce Millage's friend)
Lee Matherly (Mary Fanning's sister)

Rose McCray (Jack & Theona Fahl's granddaughter)
Jack Mohr (Gary & Jane Mohr's grandson)
JoAnn Munson (Barb Nelson's sister)
Myrtle, Terry & Mickey (Heather Dennis' friends)
Morgan Nichols (Dave Nichol's daughter)
Gary Pena (Gail Dover's friend)
Randy (Friend of the Kaffenberger Family)
Wendall Ryder (Jeff Ryder's father)
Brian Sapp (Jan Westercamp's nephew)
Lucile Sapp (Jan Westercamp's aunt)
Schmidt Family (Lank Family friends)
Keith & Betty Schmidt (Alinda Littrel's friend)
Paul Stobaugh (Jean Bowrey's brother-in-law)
Joy Taylor (Deborah DCamp's mother)
Brian Turnmeyer (Dean & Joey Arney's nephew)
Andrea VanDyke (Beverly Fanning's mother)
Westin (friend of Heather Dennis' co-worker)
Shirley Whitbeck (Doris Meier's friend)
Women at the Well, Mitchellville, Iowa

And pray in the Spirit in all occasions with all kinds of prayers and requests. With this in mind, be alert and always keep on praying for all the Lord's people.

Ephesians 6:18

Please call the parish nurses or church office staff at 355-5218 with updates and to help keep our prayer list current. Thank you!

Welcome Cheryl

The Unity Point Parish Nurse Program has recently expanded training for those who are not nurses. They now offer the opportunity to become involved in the program as a Health Advocate.

We are very pleased to have Cheryl Ewert join our Asbury Parish Nurse Team as a Health Advocate. Please welcome Cheryl and watch for exciting new ways she plans to help us expand our program next year!

Brenda Sherrick & Carol Jackson



Foundation Gift Recognitions

The Asbury Foundation Committee wishes to acknowledge and thank John Cramond for his gift to the Asbury Foundation in celebration of his birthday.

If you have a birthday or other occasion in December and would like to be a part of the Asbury Foundation Ministry you may leave your gift (marked accordingly) in the church office or in the offering plate. Your gift provides the satisfaction of knowing that you are helping future generations and assures you are doing your part to guarantee a strong and promising future for the life and work of Asbury. For more information on the function and purpose of the Asbury Foundation please feel free to contact John Rabine.



Prayers for our Military

Devon Booton—North Carolina
(Gavin & Shannon Wolever's son & Leanna DeWild's grandson)

Arkarris Bragg—Shaw AFB, SC
(Wynell Bragg's grandson)

Zack Howard—South Korea
(Tom & Kay Howard's grandson)

Major Adrienne Stahl - Florida
Lt. Col. Brian Stahl - Florida
(Lorraine Stahl's grandchildren)



Our thoughts and prayers are with Dan & Jan Westercamp on the death of their brother-in-law, Bruce Hopp, on October 10.

Dan and Terry Miller on the death of Dan's brother, Mark Miller, on November 12.



Come hear the RiverBend Bronze Handbell Ensemble ring in the Christmas Season!

A free will offering will be collected and all ages are welcome to attend.

Saturday, December 7, at 2:00pm
St John's United Methodist Church
109 E. 14th Street, Davenport, IA

Saturday, December 14, at 3:00pm
St. Andrews Presbyterian Church
140 Gathering Place Ln, Iowa City, IA



Asbury Men's Group

Our Men's Group Mission is to *Build Our Faith through Study, Service & Fellowship and to Make the World a Better Place*

We thank all the men who have participated in several service projects, both within and outside the walls of Asbury.

If you have been considering attending our men's group, now would be a great time to come to one of our meetings.

Upper Room Men's Group on December 14 and 28

Upcoming studies will be at Asbury & are planned for **2nd and 4th Saturdays 7:30-9:00am**

We always have an open chair, so please join us for any or all gatherings!

Our meetings begin with some fellowship & conversation followed up by some study & a video, then we wrap up with Joys and Concerns. We also have the opportunity to meet outside the Saturday meetings with a specific prayer partner. Building these relationships outside of church with men in the group has proven to be a terrific way to get to know the men in the church and grow closer to each other.

Perhaps invite your neighbor or co-worker, especially if they might not have a church home. Visitors are always welcome. If you can't join us, please keep all our Asbury men in your prayers.

For more information please contact:

Cliff Pim at 563-340-2722 cpim@hhsales.net

Phil Paulson at 309-502-9236 paulsonphil2@gmail.com

Fellowship With Purpose Service Group

The Fellowship with Purpose group will meet on **Friday, December 6th and 20th at 8:15 a.m.** for coffee, fellowship and to help Dan prepare the building for Sunday worship. This group meets on the first and third Fridays of each month and everyone is welcome! We finish up by 10:00. **Please join us!**

For more information please contact Dave Stedwell at dstedwell@gmail.com or (563) 650-4220.



Wednesday All-Church Meals – 2019 *An Opportunity for Members, Committees and Ministries to Work Together Across the Church*

Dear Asbury Congregation:

We hope everyone is feeling and being loved during Advent season!

Please discuss preparing and serving a meal with your group, and let me know as soon as possible what date might work for you. We GREATLY appreciate everyone's help!

We had some wonderful meals in November; I hope you've been able to join us! The Worship Commission, 4-5th Grade Youth Group, and Finance Committee all provided delicious meals.

We are currently seeking groups to prepare and serve meals on January 15 and beyond. **Every Wednesday in February through May 6 is open, except for no meal on March 18 during Spring Break.**

No group is too small! We have helpers from the Hospitality Committee that can pitch in or you can join another small group. We can also help you come up with your menu.

Please e-mail me (Cindy Bruhn - adesign@mchsi.com) or call or text (563-650-7963) to let me know when your group can serve. Patty, in the church office, can help you get scheduled, too.

Thank you very much!
Cindy & Jo

Upcoming Meals

November 27—NO MEAL—Happy Thanksgiving!
December 4—Men's Group & LIFT—Pulled Pork
December 11—Rachel Circle—Favorite Potluck Dishes
December 18—Praise Band—Pizza

No Meal on December 25 and January 1



Let's Ring!!

Asbury's Morning Bells are looking for ringers to join the bell choir and play for Sunday worship services!! If you have ever wanted to try it, and have some background in music, come join us for rehearsal!!

Rehearsals are on Saturday, December 7th and 14th at 8:30am. Our tentative schedule is to rehearse 2 consecutive Saturdays and play the next Sunday.

If you have any questions contact Gail Baldwin 563-940-2276.

Come join in the fun!!



Handbell
Choir





Stewards of Creation

The earth is a gift, entrusted to us, borrowed from future generations.
Prayer: *Help us to reclaim and maintain the goodness, wholeness and integrity of all you have created.*

December Congregational Challenges

Find Alternatives to Wrapping Paper - Wrapping paper is non-recyclable.

- Instead of traditional gift wrap, you may want to try some eco-friendly alternatives including fabric, a towel, a scarf, old maps, newspapers, tins, jars, inside-out chip bags, baskets, children's artwork or a reusable box.

<https://www.treehugger.com/green-home/12-eco-friendly-alternatives-wrapping-paper.html>

Consider Each Purchase Carefully.

- Ask: *Is this needed? * How long will it last? * Can it be reused? *What will be done with it when it is no longer needed? * Where will it wind up? * What impact will it have on the planet?
- When purchasing clothing, consider planet-friendly natural, organic and recycled fabrics. Look for cotton, wool, silk, cashmere, hemp, linen, etc. (Synthetic fabrics/polyester are derived from petroleum, that can cause shedding of microfibers and an inability to decompose at end of life.)

Check out the bulletin board, near the elevator, to see a list of all of our challenges. Here you can also read stories our congregants have shared, as they have been good stewards of creation.

Terracycle

We will continue collecting:

- Plastic cereal bag liners from inside cereal boxes
- Chip snack bags - family or individual size, any brand (No candy bags please)

Thank you to everyone who has brought in their bags!

The collection bin is in our main floor west coat closet. These items will be donated to Terracycle at Trinity Lutheran Church. Terracycle recycles items that are not accepted in our city recycling program.

Green Church

Some new LED lights have been installed in our Narthex and there are plans to change more light bulbs to LEDs in high use areas of the church.

Additional recycling bins have been added throughout the building for your use while serving or working at church. When you are here, please recycle paper, clean tin cans, bottles, glass jars, paper cups & any item collected by the Bettendorf/Davenport recycling program just as you would at home.



Hannah Circle - Tuesday, December 10 at 9:30 a.m.

Christmas Brunch at Suzanne Yoder's Home:
5692 Butterfield Ct., Bettendorf All women are welcome!

Rachel Circle - Wednesday, December 11—Note Date!

We are hosting the Wednesday Night All Church Meal Meeting immediately following meal clean-up. Check your e-mail for specific information. Program: Please bring items for the family Rachel Circle has adopted. Visit via FaceTime with our Rachel Sisters who have moved away! Hostesses are Alinda Littrel and Wynell Bragg

LIFT Ladies In Fellowship Together



Through Christian fellowship, LIFT will gather to support those in need, grow our relationships within & beyond Asbury's walls, and serve the community, spreading God's word!

We are excited about our upcoming Mix & Mingle Events!

Once again, we will be assisting with the Holiday Meal at The Center, 1411 Brady Street, Davenport, on December 14th. This is a rewarding opportunity to serve in our community. LIFT ladies will be providing green bean casserole, cookies, and crafts. If you would like to participate by providing food, helping at the craft table, or just being present, please contact Stephanie Pim at pimfamily5@gmail.com.

Food For Thought! LIFT will be busy meal prepping on Saturday, **January 11th** from 8:00 a.m. till 11:00 a.m. in the lower level Fellowship Hall at Asbury UMC. These meals will be kept in the Asbury freezers for use in our new warming center at Asbury. We will also be collecting toiletry items this day for those who will be visiting our warming center. More details on this event and a list of items will be included in the January Good News and posted on our LIFT Facebook page in upcoming weeks. Please contact Jenny Bloomquist at 563-320-8632 or Stephanie Pim at 563-340-2738 to RSVP to learn more!

Mark Your Calendar—Thursday Evening, February 20 for One-and-Done Book Club at Element Tea & Wine Lounge in Davenport. Details coming soon.

Be sure to check the Asbury UMC Newsletter each month and our LIFT Facebook page for more details on our upcoming Mix and Mingle events! Our Facebook page serves as a home base, so be sure to check it out, not only for upcoming events but also words of inspiration! You may also contact the church office or Marian Paulson for more information.

We hope you can join us for some good fun and fellowship!

Asbury Warming Station

We are concerned about the upcoming winter being very cold! The Farmer's Almanac states we are going to be colder than last year. In response, Asbury will be hosting a warming station when the wind child is negative 30 or colder. Last winter there were five days that fit that criteria. We have been informed that currently there are no local warming stations that allow children.

Our purpose is:

1. To do God's work by providing warmth and offering food & Christian hospitality to the vulnerable.
2. Collaborate with surrounding churches to provide a warming station designed for families with children.

There is a great need for a warming center in our community. We will start the program by limiting our number to 25 this winter, although the Salvation believes we could accommodate 50.

- We will be open to the public from 8:00am to 5:00pm.
- We have a committee that is setting the guidelines and rules.
- We will provide coffee, hot tea, hot chocolate throughout the day.
- We have two freezers in the basement that are empty. We would like volunteer donations from the congregation of cookies, bars, muffins, or coffee cakes that we can offer in the morning. We will freeze them ahead of time so they are available to serve whenever needed.
- We would also like to offer something hot to serve in the afternoon. Donations of chili, chicken noodle soup or vegetable beef soup to freeze (dated and with main ingredients listed in case of allergies) will be greatly appreciated. Please put your name on your donations so we can recognize everyone who participates.

It will take many to pull this off and there are many ways you can help with this outreach ministry. In addition to bringing food to be frozen, we will need volunteers to sign-up to help by coming in on these cold days to work 4-hour overlapping shifts. We feel there should be 7 to 8 people with specific assignments. Shifts will start at 7:30am to get the coffee going and the room set up. The last shift will be over at 5:30, with clean up of the building. There is something for everyone who wants to serve in this ministry.

Global Ministries has graciously allowed us to use the funds raised from their Thanksgiving Pie Sale to help purchase bread, cheese & sandwich meat for the noontime meal. The funds will also purchase coffee, hot chocolate and tea to be served all day. We want this ministry to be self-sufficient since it is not budgeted into any other area.

We have contacted the surrounding churches and there are currently four churches willing to assist as soon as we determine what we need. We are asking them to have someone that can call for help manning the warming station, and we have asked them to collect hats, gloves & socks for give away to people before they leave. Kids are always losing gloves and hats!

Please do what you can as we work together for the same purpose...

Working for God by Serving God Together!

Thank you!

Carol Jackson and Brenda Sherrick, Asbury Parish Nurses

Greetings...from Pastor Tom



Christmas involves a story from the past that gives a vision for our future.

You know that Christmas is a time to remember and celebrate the birth of Jesus as the Son of God. That is something that has happened in the past. But the story includes the promise of peace on Earth and goodwill toward all. That is a vision of what is still to come. Because God has come to us as a Savior, we have hope for our future.

On November 11 about 50 people attended the Vision Casting Event and Church Conference at Asbury. In addition to our annual church conference business I, as the senior pastor, also shared a vision of a future direction for our church. Any successful vision for the future must be grounded in the past.

I shared a few specific proposals for future outcomes. One was the creation of a task force to investigate the feasibility of having a preschool at the church again. I also shared the vision of creating neighborhood "captains" for every neighborhood in our community. These would be members of Asbury United Methodist Church who welcome new people to their neighborhood and simply serve as a caring presence to their neighbors.

Another vision that I lifted up was that we would be a people who trust God so much that we are not afraid to die. This is a vision that is rooted in our past as people called Methodists. John Wesley was the primary founder of the Methodist movement. In 1736 he came from England to the American colonies as a missionary. On the long journey across the ocean on a sailing ship, John Wesley was impressed with a group of German Moravian Christians who were not afraid when the storms rocked the ship and the waves crashed over the bow. It made him realize that he had not yet attained such a level of trust in God that he was not afraid to face his death.

It was after he had returned to England, at a prayer meeting on Aldersgate Street in London, that he came realize that Christ had died for him personally and that his sins were truly forgiven. He wrote in his journal that he "felt his heart strangely warmed." He went on to share the Good News of God's love for everyone until the day that he died. His last words were, "Best of all, God is with us."

The message of Christmas is that God is with us (Matthew 1:23). We can be a people who are not afraid to die. That really means that we are not afraid to live. There will be plenty of challenges in the coming year, but because Jesus is the bridge that connects us to God, we do not need to be afraid. Our vision for the future is one where God will bring peace and goodwill to the Quad Cities and the world through people like us.

Pastor Tom

Pastoral Care

If you are hospitalized and do not receive a visit from Pastor Tom, Pastor Heather or one of our Parish Nurses Brenda Sherrick & Carol Jackson within 24 hours, it means we have not been notified by the volunteer callers at the hospital. **Please** call the church or parish nurses at home to let us know.

Asbury Pastors

If you have an urgent need after office hours, Pastor Tom Carver can be reached at 319-573-9689. His email address is: pastortom@asbury-bett.org

Pastor Heather Dorr can be reached at: 563-528-2244. Her email address is: pastorheather@asbury-bett.org



Along with ACH Auto Debit, we also offer **VANCO Online Giving** to provide our members convenient ways to fulfill their stewardship commitments!



For giving made easy,
scan this QR code with your
phone for easy access!

Simply go to our website at www.asbury-bett.org or
download the app to your phone.
Give your offering in two easy steps!

You may give your electronic gift to Asbury through the Vanco Give Plus app. Simply download Give Plus from your app store onto your phone. A list of churches will come into view. Choose Asbury! That's it! This easily accessible app makes it convenient to give your offering anytime day or night...even during worship!

- **Direct Debit Giving Online** (EFT) is used to automatically transfer funds online from your checking or savings account to the church's bank account.
 - **Credit & Debit Card Giving** lets you make contributions automatically on a predetermined schedule using a credit or debit card online.
 - **ONLINE GIVING** lets you go to www.asbury-bett.org at any time to set up an automatic donation plan, change your donation plan, make a one-time donation or view your online donation history.
- We also offer.....**
- **ACH Auto-Debit** Call the church at 355-5218 to fill out the appropriate form to have Asbury automatically transfer funds from your checking or savings account to the church's bank account.

If you have any questions about **ACH AUTO DEBIT** or **VANCO ONLINE GIVING**, please contact **Cliff Pim** or the church office.



	First Name Last Name
<i>Asbury United Methodist Church</i>	

Asbury Nametags

Asbury nametags are available upon request to Asbury members 8th grade and older by calling the office or filling out a form found in each narthex. Please indicate if you want magnet, pin or a clip back. Thank you!

If you have ordered a nametag, it may be picked up in the church office.



We would like all members of Asbury to know that we have an Angel Network Fund. This fund is available immediately to help any member of Asbury that needs assistance. We are ready to provide financial help or food from the Bettendorf Food Pantry.

If you need assistance, please contact either of our pastors or our parish nurses, Brenda Sherrick & Carol Jackson. These requests will be kept confidential.



Please Remember....

Gifts not specifically marked are all posted to the General Fund. If you are giving to the Capital Fund (or any other designated account) you must include a note or mark your check memo line accordingly.

Thank you!